

CERTIFICATE OF LOCATION OF GOVERNMENT CORNER

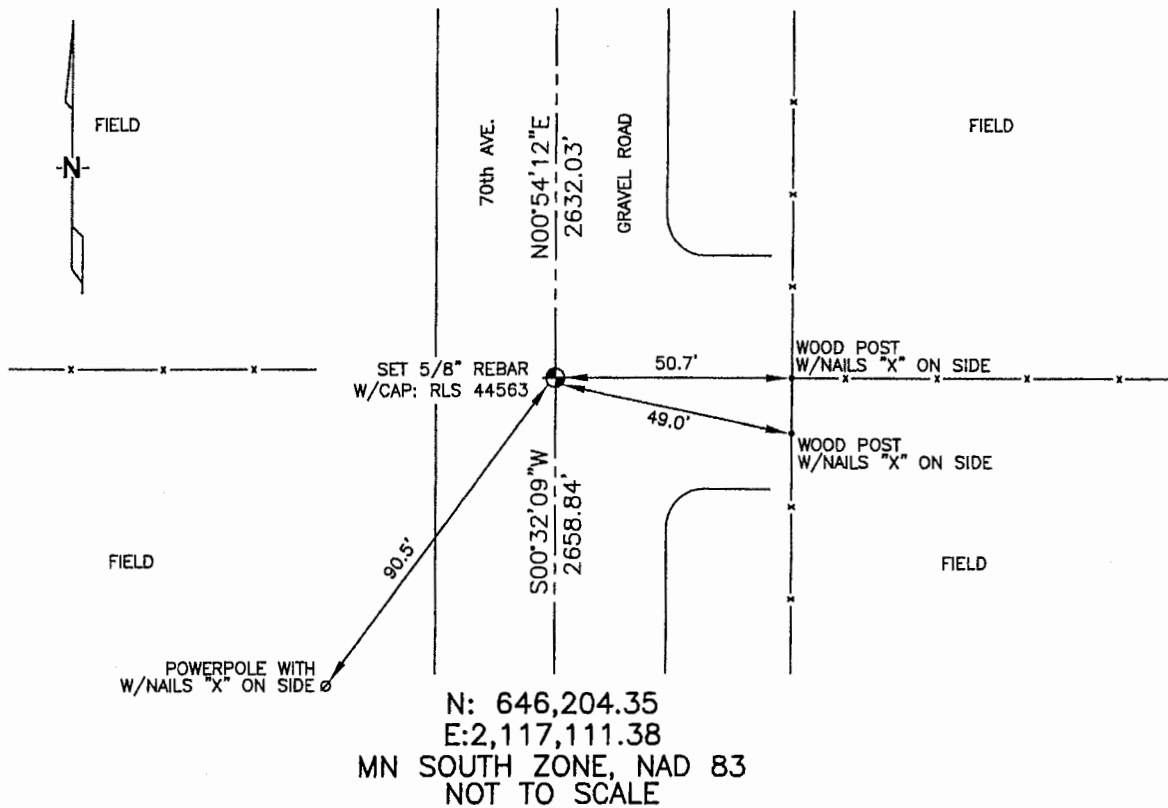
WEST 1/4 Corner of Section 32, Township 105, Range 42, 5TH P.M.

STATE OF MINNESOTA, County of MURRAY

At the corner location shown on the sketch :

- On _____ found _____
- left monument as found, lowered monument, removed monument (explain)
- On 3/9/2006 set 5/8" REBAR WITH CAP: RLS 44563.
BETWEEN FENCE LINES RUNNING EAST & WEST.

Sketch of reference ties



Statement of evidence relative to this corner location is on back page

I hereby certify that this document and the data contained herein was prepared by me or under my direct supervision.

Thomas V. Jeff 6/29/06
 Thomas V. Jeff Date
 Registration No. 44563

- Land Surveyor, Professional Engineer
- County Surveyor, County Engineer

OFFICE OF THE COUNTY RECORDER

County of _____

SEP 28 2006

I hereby certify that this document was filed in the Co. Recorders office at _____ .M. on the day of _____ A.D. , 20

County Recorder James V. Johnson
 By _____, Deputy

DOCUMENT NO. _____

STATEMENT OF EVIDENCE:

WEST 1/4 CORNER, SECTION 32, T. 105 N., R. 42 W.,
MURRAY COUNTY, MINNESOTA

- 1861 D.W. Wellman & S.S. Smoot, US. Deputy Surveyors,
monumented corner.
- ? Date Murray Co. found fences on line.
Ties: W-27.0' fence;
E-31.5' fence.
- 4/30/1901 Murray Co. found 2 stones & a cotton wood stake.
Placed a large stone, 4' east & 4' south; no ties.
- 1935 Murray Co. found stones with fences on line, east & west; no ties.
- 3/09/2006 Ulteig Engineers, Inc., Survey Crew, Brain Payne Party Chief,
found fence lines going east & west, no stones.
Set a 5/8" rebar with cap: RLS 44563 in C/L of gravel road,
opposite the fence lines.
Ties: SW-90.5' to nailed "X" on power pole;
SE-49.0' to nailed "X" on wood post, in fence line, southerly;
E-50.7' to nailed "X" on fence corner;
N-2632.03' to NW corner, Section 32;
S-2658.84' to SW corner, Section 32.